

## LIMITED LIFETIME WARRANTY

Woodstream warrants that this product will be free from defects in material and workmanship under normal use for 1 year from the date of original consumer purchase.

Within 30 days of the original consumer purchase, this product is covered by Woodstream's 30-day money back guarantee. If you are not satisfied with the performance of this product, you may return it with the original receipt to the place of purchase for a full refund.

**After 30 days and during the initial 12 month period Woodstream will, at our option, repair or replace the defective part(s) for a \$15 processing fee. Shipping costs to our facility are not covered by the Warranty. A copy of the original receipt showing the place and date of purchase must accompany the returned item. Please contact Woodstream for a Return Authorization Number (RGA), 800-800-1819, before returning the product to Woodstream. Products without an RGA number will be refused.**

After one year from the date of the original consumer purchase, a prorated schedule is available to provide additional coverage. For information regarding this schedule, please contact our Consumer Care Department at 800-800-1819.

Use the following address when returning product via UPS or U. S. mail:

WOODSTREAM CORPORATION  
69 NORTH LOCUST ST.  
LITITZ, PA 17543

ATTN: CONSUMER CARE DEPARTMENT  
RGA# \_\_\_\_\_

**This Limited Lifetime Warranty is offered only to the original consumer purchaser.** This Limited Lifetime Warranty is subject to the condition that any covered defect occurs under normal conditions of use and maintenance and that Woodstream receives prompt written notice of the discovery of the defect within the Limited Lifetime Warranty period. It does not apply to damage or failures that result from physical abuse or misuse of the product. The Limited Lifetime Warranty is void if any attempts are made to alter or repair the product prior to returning it to our facility within the Limited Lifetime Warranty period. This Limited Lifetime Warranty does not cover lost parts, broken probe studs or items displaying excessive wear. Wire that has been removed from the spool and /or placed in the ground and flags that are rusted or have been used are examples of items displaying excessive wear.

EXCEPT AS SPECIFICALLY SET FORTH HEREIN, THERE ARE NO WARRANTIES, REPRESENTATIONS, PROMISES OR ASSURANCES BY WOODSTREAM, EITHER EXPRESSED OR IMPLIED, WHETHER BY LAW, CUSTOM, PREVIOUS TRANSACTION OR OTHERWISE, INCLUDING WITHOUT LIMITATION, WARRANTIES OR MERCHANTABILITY OR FITNESS FOR A PARTICULAR PURPOSE WITH REGARD TO THE PRODUCT. WOODSTREAM'S LIABILITY IS SOLELY AS STATED HEREIN AND NO OTHER LIABILITY SHALL EXIST, WHETHER BY NEGLIGENCE, STRICT LIABILITY, TORT OR ANY OTHER CAUSE OR ACTION. ALL LIABILITIES FOR WOODSTREAM STATED HEREIN ARE THE SOLE AND EXCLUSIVE REMEDIES OF THE ORIGINAL CONSUMER PURCHASER. IN NO EVENT SHALL WOODSTREAM BE LIABLE FOR ANY CONSEQUENTIAL OR INCIDENTAL DAMAGES, OR ANY OTHER TYPE OF DAMAGE WHICH MAY BE CAUSED IN WHOLE OR IN PART BY ANY FAILURE, DEFECT OR PROBLEM OF THE PRODUCT.

This product is not a substitute for traditional obedience training. Woodstream does not guarantee the effectiveness of this product due to variances in canine personality, temperament and influences outside of Woodstream's control.

Some states do not allow the exclusion or limitation of consequential damages, so the above limitation or exclusion may not apply in all instances.

FF/FFDIM040205

**For more information go to: [www.havahart.com](http://www.havahart.com)  
or call 1 (800) 800-1819 ext. 450 from 8 am – 7 pm EST.**



Caring Control for Pets and Wildlife



**5140 Fence Free & 5132 Fence Free  
Deluxe Instruction Manual**

# OPERATING INSTRUCTIONS



## INTRODUCTION

Congratulations on your purchase. The Havahart Fence Free Pet Containment Systems can help you safely and effectively train your dog to stay within the boundaries you set. Havahart is committed to caring control of pets and wildlife, and all of our products are designed to enhance the relationship between animals and people. Through effective use of Havahart canine products, our goal is to help strengthen the bond between dogs and their owners.

The Havahart Fence Free Pet Containment Systems have proven to be effective for all types of dogs, ages 8 months and above: we do not recommend using the system for containing puppies. In order to enjoy the full benefits of the product, you'll need to spend time installing the system and training your dog to respond to it. While each training session can be easily worked into your daily routine and should be short – just 5 minutes or so – consistency is the key to success. This initial investment in time and energy will result in long-term rewards: security and exercise for your dog and peace of mind for you!

Before you begin, it's very important that you take the time to thoroughly review the instruction manual, training guide, and training DVD. These materials have been specially prepared in consultation with professional dog trainers to help guide you through the installation and training process to ensure your successful long-term use of the Havahart Fence Free Pet Containment System.

## FREQUENTLY ASKED QUESTIONS

### What should your expectations be?

### Will the Fence Free System work for my dog?

It's important to remember that every dog has a unique personality and responds differently to stimuli. While there is no way to know how your dog will react to its introduction of the training collar, Havahart products have proven effective for use with dogs of virtually every size, every breed and every age, 8 months and older. For the safety and security of you and your dog, initial training should take place in a confined area where you have complete control over the situation. Please be aware that dogs with aggressive behavior could turn on the trainer upon receiving stimulus for the first time. If you believe your dog has aggressive behavior or there is a history of such behavior, we suggest you contact a certified animal trainer before using any Fence Free products.

### How does the Fence Free System work?

The Fence Free and Fence Free Deluxe use state-of-the-art electronics to help you train your dog to stay within the boundaries you set. Through training, your dog will learn to recognize the boundary visually (aided by flags), through an audio tone and a corrective electronic stimulus transmitted through the Fence Free dog collar.

When the dog reaches the edge of the boundary signal, you will hear a warning tone that will last as long as the dog remains in the warning zone. If the dog moves away, the tone shuts off. If the dog continues toward the boundary, the initial low-level stimulus occurs.

The first time your dog receives a correction, normal reactions may be yelping or jumping. These reactions will decrease as he/she becomes accustomed to the collar. You should notice improvements in your dog's behavior during the first week of training.

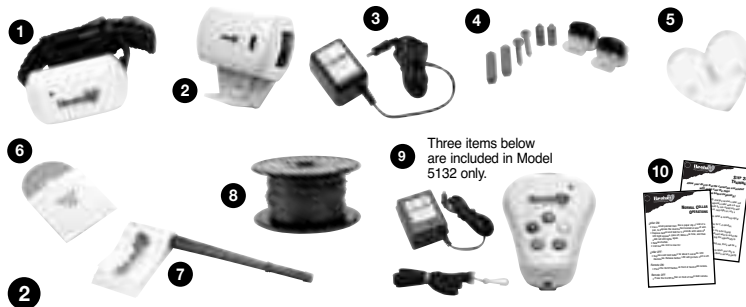
### Is the Havahart Fence Free System safe?

The Havahart Fence Free Systems are safe and humane. To protect your dog and yourself, please observe the following **safety precautions**:

- Never leave the collar on your dog for more than 12 hours at one time.
- Only use the Havahart<sup>®</sup> Fence Free System on healthy dogs, ages 8 months and older. Consult your veterinarian before using the collar if your dog has health problems.
- Check collar fit each time you place collar on your dog— the collar must be fitted properly to work effectively (see “Fitting the Collar”).
- Check dogs daily for skin irritation and do not use the collar if the skin is irritated.
- Always use the lowest stimulation possible to train your dog. On small dogs (less than 8-10 lbs.) use Level 1.

### A. Contents of Havahart<sup>®</sup> Fence Free and Fence Free Deluxe

1. Waterproof Collar Receiver.
2. Wall-Mounted SMART Transmitter/Control Box.
3. Transformer – Plugs from Wall-Mounted Transmitter/Control Box into electrical socket.
4. Accessory Bag – Contains Wire Splicers, Short-Haired Probes, Screws and Anchors.
5. Test Light – Hook collar onto test light. With both Fence and Collar on, walk with test light to boundary. Unit lights and buzzes when operational. Test Light is also used to assure that the hand held remote (5132 only) is delivering stimulus to the collar.
6. Training DVD.
7. Training Flags.
8. Boundary Wire, 20 gauge.
9. Hand Held Remote, Battery Charger & Lanyard (Model 5132 Fence Free Deluxe Only).
10. Field Training Cards – Pocket-sized instructions to take with you in the training area.



## B. Features of Havahart. Fence Free and Fence Free Deluxe

The following built-in features help increase the system's effectiveness:

### 1. Run-Through Protection

If your dog continues toward the boundary, the stimulus will automatically increase. It starts at the lowest level, after emitting a warning tone and increases to the highest level (as set by the user) as the dog gets closer to the boundary.

### 2. Over Correction Protection

If your dog becomes "trapped" in the signal field, this feature limits stimulation. It does this by not accepting any additional signal from the fence for 30 seconds; therefore stimulation of your pet is stopped. The collar will automatically revert to normal operation after this 30-second window.

### 3. Collar contains 5 Stimulation Levels - Comes Ready to Use, Preset at Level 1.

### 4. High Quality NiMH Rechargeable Batteries.

**NOTE:** The collar and hand held transmitter (supplied with the 5132 Fence Free Deluxe) are powered by NiMH (nickel metal hydride) batteries. This high quality battery doesn't suffer any memory loss after repeated recharges. It will take a full charge every time you recharge it for two hours. You can expect this battery to last many years under normal use. In addition, under normal use conditions you can expect the battery to hold a charge for many days. We do recommend that you keep the collar battery fully charged by placing it on the charger whenever it's not in use. This assures peak sensitivity when the collar, fence and transmitter are communicating with one another.

### 5. LED Indicator Light for testing delivery of stimulus.

### 6. UL Listed Components Included.

### 7. Product Meets FCC Part 15 Regulations\* (5132 Only).

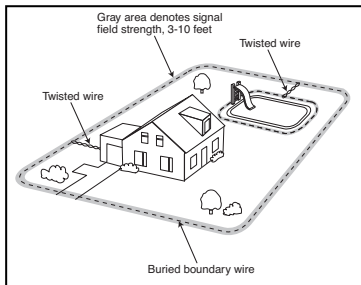
This device operates under part 15 of the FCC Rules. Operation is subject to the following conditions: (1) This device may not cause harmful interference, and (2) this device must accept any interference received, including interference that may cause undesired operation. Any modification to this device not expressly authorized by Woodstream Corporation may void the user's authority to operate this device.

*To begin using your Havahart Fence Free Pet Containment System, you'll need to plan and install the system boundary wire, and to make sure that all the electronic components communicate with one another. While the system has been designed for easy installation, please allow adequate time to complete each essential step as detailed in the following instructions.*

## 1. DESIGN YOUR BOUNDARY

Using graph paper, select the areas of your property in which you want to contain your dog. Make a diagram to help avoid obstacles or permanent objects in your yard, and consider the following:

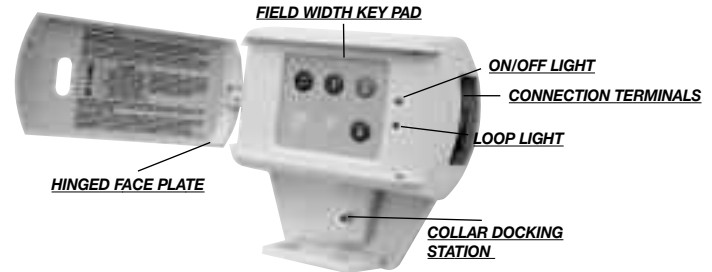
- The boundary wire must make a continuous loop to and from the transmitter.



- Round the corners of boundary wire. Try to avoid sharp corners. This will produce a more consistent signal field and avoid confusing your dog in these areas.
- The ideal signal field width is 4-5 feet for a total boundary width (both sides of the wire of 8-10 feet.) Avoid making passageways too narrow or your dog may be hesitant to use them.
- Contact your utility company to mark off utility lines (phone, electric, cable) before you install your boundary wire.
- You need to stay 10 feet away from any neighbor's underground fence to ensure their signal does not interfere with yours.

## 2. INSTALLING THE WALL UNIT

Mount the wall unit on any interior wall near a standard 110-volt household outlet with the enclosed screws. Plug the transmitter's power adapter into your household wall outlet and plug the other end into the transmitter. Press On/Off button. The On/Off LED (top) should be on. The transmitter will withstand freezing temperatures, but it is not waterproof and should always be installed indoors; for example in a garage, basement or shed.



## WALL UNIT FEATURES

- **Lightning/Surge Protection** – The wall unit includes a built in surge protector to protect it against normal voltage spikes. However, your buried wire is a natural "lightning rod." Because lightning strikes are massive energy bursts and can damage the unit, it is recommended that you unplug the wall unit and disconnect the wires during storms, or install a stronger surge protector. We recommend protecting your System with The Max® 2 Dog Fence Surge Protector available through Panamax.com.
- **Wire Connectors** – Easy-to-use push release connectors let you quickly connect or disconnect the boundary wire.
- **Docking Station** – Eliminate dead batteries and lost training time by always plugging the receiver collar into the recharge port when not in use. To contain 2 dogs, use the Extra Dog collar Receiver, Model #5145.
- **Field Width Keypad** – The keypad controls the field width, this is the distance from the boundary wire to where the receiver collar is first activated.
- **Indicator Lights** – There are two indicator lights – the top one is the On/Off

power light. It is red when power is on. The bottom light is the loop light. When the loop light is red, it indicates the wires are connected and form a continuous loop. Both lights should be red for the unit to be operational. If there are no lights, check the connections, wires and power source for potential problems such as: one or both wires are not properly connected; both wires are connected but the wire is broken or nicked; power loss; or the transmitter has malfunctioned. If the problem persists, contact Woodstream Customer Care at 1-800-800-1819 ext. 450.

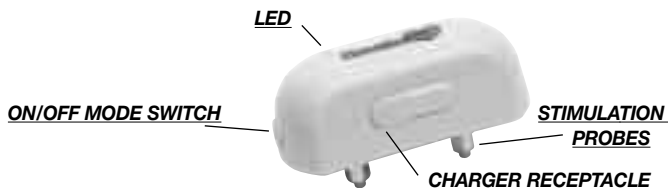
### 3. FITTING, CHARGING THE COLLAR

#### FITTING THE COLLAR & INSTALLING THE PROBES

**Very Important!** The Collar must be fitted properly to work effectively. Use the short probes for short-haired dogs and long probes for thick or long-haired breeds. It is recommended that the long probes be used on all breeds just to be sure that contact with the skin is assured. Position the collar high up on your pet's neck underneath the chin, with the probes facing upward, touching your pet's skin. Hand tighten the probes as far as you can. If needed, use pliers or wrench to go one turn further.

**Do not over tighten.** Always use rubber insulators to keep probes tight and provide insulation during damp conditions. The rubber insulators are necessary to maintain the waterproofing. Make sure probes maintain contact with skin. Adjust nylon collar to fit snug but not tight. You should be able to slide one finger between your pet's coat and the training collar. The correct fit is essential because **most training failures** are caused by probes not making direct contact with the skin.

Once collar is adjusted to correct length, remove collar, trim excess, and use a small flame to melt end to prevent fraying. Remember, for growing dogs, check collar size weekly and adjust when necessary. Allow enough nylon for the collar to grow with your dog. **IMPORTANT:** Never leave collar on the dog for more than 12 consecutive hours.



#### TURNING THE COLLAR ON & OFF

To turn the unit On use a small pointed item, like a paper clip or end of a pen, to depress the operational button. Button is located at end of unit and is slightly inset. Depress button and hold for 5 seconds until solid red LED light appears, goes off, blinks one time, and then solid red LED lights again. Release button. Unit buzzes. Unit is now on. Note: After turning the collar on, DO NOT attempt to turn it off until it has been on for over 30 seconds. To turn the unit Off, depress and hold button for more than 5 seconds. LED illuminates as soon as the button is pushed. While depressed for the 5 seconds the LED goes off, then blinks and turns on. Now release the button. LED goes off. Unit is off.

### CHARGING THE COLLAR

**Fully charge the collar before the first use.** Initial charge will take up to 10 hours and all subsequent charges should take two hours to completely charge the battery. When the collar receiver battery requires charge, the LED will rapidly blink. Rapid blinking occurs in a pattern of 2 quick blinks, a 5 second pause, followed by 2 quick blinks and so on. On a charged unit, the LED will blink red at an interval of 1 time every 3 seconds.

To charge the collar, make sure the power transformer is plugged in and the LED is on. Place the collar on the wall unit charge port.

The simplest way to keep your collar in peak condition is to always leave it turned on and on the wall unit charger when not in use.

### 4. INSTALLING THE BOUNDARY WIRE

#### TOOLS NEEDED FOR INSTALLATION

- Straight-edged spade
- Caulk gun with silicone caulking
- Safety Glasses
- Circular saw with masonry blade - for cutting concrete or driveway
- Flathead screwdriver
- Electrical tape
- Drill with drill bit or masonry
- Circular saw with masonry bit if drilling through wood or concrete

Boundary wire should be laid above the ground according to your design from Step 1. **DO NOT BURY WIRE UNTIL YOU HAVE TESTED THE SYSTEM AND ARE SURE IT IS WORKING PROPERLY.**

For the system to work properly, the wire must make one continuous loop. The signal is transmitted from one terminal of the wall mount control box, through the wire, and back to the other terminal.

Knowing where any utility obstacles might be (phone, electric, cable), lay out the wire above ground. Be sure to stay at least 6 feet away from any utility obstacle that runs parallel with your designated boundary. We recommend a 4-5 foot signal field to ensure the best operation of the audio warning tone and the run through protection feature (correction increases to a pre-set level as the pet approaches the wire). The signal field is the distance from the wire back into your yard. There is another signal field of the same size on the other side of the fence wire, however you want your dog corrected and/or contained before it crosses the wire. Signal field width can vary with conditions (snow, fall foliage), wire length, wire gauge, etc. (see "Setting the Signal Field for Boundary Width"). Use round corner turns to follow the perimeter of your fence installation. Avoiding sharp corners will produce a more consistent signal field and avoid confusing your pet in these areas. Avoid making passageways too narrow or your dog may hesitate to use them.

#### CANCELLING THE SIGNAL

You need to cancel the signal in the areas where you do not want the dog to receive correction, such as inside the garage or the driveway area close to the house. Twisting two strands of live wire cancels the signal. To twist the wire, cut two equal lengths and hold them side-by-side. Insert both ends of wire in a power drill; spin

both ends until the twists are 1-3 inches apart. The tighter the wire, the better the signal cancellation. The wires can also be twisted manually. Both ends of the twisted section need to be spliced back into the main loop. Remember it is only live, powered wires that cancel one another when twisted. (See boundary diagram on page 3).

### TESTING THE WIRE

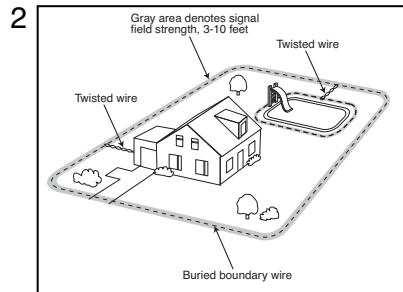
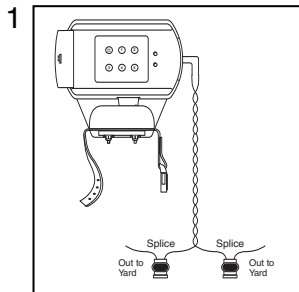
While the wire is still above ground/not buried, test the wire by turning on the wall mount transmitter/control box and pushing a button to determine the desired boundary width. **NOTE: It is important to push a button, as the unit does not default to a specified boundary width.** This is only for test purposes. There is more information on Setting the Signal Field in Step 5. Hook up the heart-shaped test light to collar and slowly walk the receiver collar toward the boundary wire, listen for the warning tone, and watch the test light illuminate.

### BURYING THE WIRE

Once you are sure the system is working properly, you're ready to bury the wire. Using a flat blade spade or edging tool, cut approximately 2" into ground. Begin near the wall mount control box and continue around the path of loop wire. Push wire into ground using fingers or a blunt tool, such as a paint stick. Cover the wire with dirt or turf. **Driveways/Sidewalks** – When crossing an asphalt driveway, make a 2" deep cut using a circular saw and masonry blade. Place the wire in the crack and seal with asphalt sealant. Use expansion joints when available on driveways and sidewalks; place the wire in the joint and seal with an outdoor caulk. When crossing gravel or installing in water, bury the wire using old garden hose or plastic PVC pipe to protect the wire, be sure to securely anchor pipe or hose.

### CONNECTING THE LOOP TO WALL UNIT

1. Splice the two ends of the twisted wire to each of the two ends of loop wire (see Diagram 1).
2. Drill a hole through exterior wall or window/door or run wire through an existing utility line hole.
3. Connect the twisted wire to the wall unit terminals. Wire ends must be stripped before connecting. Make sure the twisted wire runs right up to the wall unit before separating the wires for placement into the terminals. Failure to do this can cause a miniature live circuit that can induce stimulation of the collar right at the wall unit.
4. Once unit is turned on, the Loop (bottom) LED should be red, indicating a continuous loop.



### 5. SETTING THE SIGNAL FIELD FOR BOUNDARY WIDTH

To make the run through protection most effective, we recommend using a 4-5 foot signal field if possible. To select the desired signal field width choose from the five levels provided on the wall unit control box. You'll find the setting by opening the hinged faceplate on the front of the wall unit. The fence's signal field width is not preset so you must select and push the desired button. Button 1 delivers the narrowest signal field width and Button 5 delivers the widest signal field width. Increasing or decreasing the field width does not affect the collar correction intensity.

**Note:** Signal field width from your fence wire will vary from these published specifications due to gauge of wire, length of wire installed, weather and a variety of other possible factors. The wall unit is capable of driving a fence signal through many spools of wire. In order to normalize this signal field width for all installations and for the multiple other variables, your Fence Free Systems include a SMART transmitter. This patent pending technology automatically calibrates your application to deliver as close as possible to the following specifications:

Total Boundary Width (signal field in brackets)	
1	3 feet (1.5 feet on each side)
2	5 feet (2.5 feet on each side)
3	6.5 feet (3.25 feet on each side)
4	8 feet (4 feet on each side)
5	10 feet (5 feet on each side)

To validate what boundary width the SMART transmitter has actually been able to deliver in your application, measure it using the collar and test light after the installation is complete.

### 6. PLACING THE FLAGS

Final placement of all flags is critical for the effective training of your dog. Set both the collar and fence in the On mode to place the flags. Standing inside your yard walk toward the fence wire and place the flags at the spot that marks where you first hear the warning tone activated on the collar. There needs to be a flag placed every 4-6 feet around your entire perimeter. Your pet will soon learn that if he/she wanders past the point where he/she hears the tone there will be a correction.

### 7. PREPARING YOUR DOG FOR TRAINING

Before you begin any collar-assisted training you need to allow your pet to get used to wearing the collar. Place the properly fitted collar on the dog with the collar in the Off mode. Your dog should wear it continuously for a minimum of two separate but consecutive 12-hour sessions (over the course of 2 days). Allowing this adjustment period will deliver better learning, as your pet will not become collar-wise. A collar-wise pet learns quickly that it only has to obey when the collar is on its neck.

### **8. CHANGING THE RECEIVER COLLAR CORRECTION LEVEL**

The collar comes preset at Level 1. Always start with this level and check your dog's response to the stimulus. You should always use the lowest level necessary to get the desired response.

To check the current stimulation level, begin with the collar turned on. Notice the LED will be blinking once every 5 seconds to indicate a fully charged battery. Wait 30 seconds after turning on to check the setting. To check the current stimulation level, press the control button slowly twice. Watch the LED. Each time you press the button the LED will light. After the second push and following the second light, the LED will blink rapidly indicating what the current stimulation level is. One blink means it is set at Level 1, two blinks, Level 2, etc.

To change the stimulation level, turn the unit on for about 1 minute before beginning the following steps. Push and hold the power button until the light goes off. Release button. Within 20 seconds of releasing the button, push the button the number of times for the desired level (1-5). Watch the LED. Each time you press the button the LED will blink. When you stop it will blink one more time and then blink rapidly the number of times representing the level it is set at. (i.e. if you want to set it at Level 3, you would press the power button three times and then the light will flash three times confirming the setting.)

### **9. CHANGING PRESET IDENTIFICATION CODE**

Your Fence Free system has a preset identification code that allows the collar and wall unit to communicate. MOST USERS WILL NOT NEED TO CHANGE THIS IDENTIFICATION CODE. There are however certain circumstances which might require resetting the code. Examples would be:

- Your system is creating noise or static.
- Your neighbor has the same unit and your dog's collar reacts to your neighbor's boundary wire.
- The collar is not responding to the boundary field – all other aspects of the transmitter and collar are functioning properly.
- You are receiving interference (or inconsistency) in the collar's response to the boundary field.
- Your dog is getting stimulations while standing in the safe area of the yard.

In addition, it is possible to accidentally disconnect the ID code. If you were attempting to reset the ID code and did not complete the steps successfully, it is likely the result would be a disconnected ID code.

To change the preset ID code follow these instructions.

#### **Set the new ID code at the Wall Mounted Transmitter**

- 1.) Connect unit to power cord, and press and release On/Off button to turn unit on. Red power light should be lit.
- 2.) With one or both of the loop wires disconnected – press and hold the #5 button on the transmitter. When the loop light blinks 9 times, release button – you now have a new ID code set in the transmitter.

- 3.) Connect the loop wire – the loop light should light solid red showing a continuous boundary wire loop.
- 4.) Press any one of buttons 1 – 5 to set the boundary field width – use the table listed inside the front door for reference.

#### **Set the new ID code at the collar (read all 5 steps before starting)**

- 1.) Begin with a charged collar turned off. Stand within 1' of an active section (do not use the twisted wire section) of the boundary wire – turn the collar on by depressing the power button for about 5 seconds. The red light lights, blinks one time, and then lights again – at this point release the button. The collar will buzz. It is now on.
- 2.) Within 10 seconds after turn on – push and hold button until the LED lights, blinks, and lights continuously – this takes about 5 seconds. Release the button.
- 3.) Push the button again, and hold until the light comes on and then goes off – release the button.
- 4.) Walk quickly away from the boundary wire until the red LED comes on again. Allow 60 seconds for LED to come on. The new ID code is set.
- 5.) The LED will stay lit for almost 60 seconds. After the LED blinks and goes off, you can proceed toward the boundary wire to verify that the ID code has been correctly set. Place the heart-shaped test light on the collar probes. As you approach the fence the collar will emit a tone and as you continue toward the wire the heart-shaped light will come on indicating that electronic stimulation is being delivered by the collar.

#### **Note: System Operation**

The system is fully operational when the receiver collar battery has been fully charged and the boundary wire is connected and producing a strong field signal. When the dog reaches the edge of the boundary signal, you will hear a warning tone that will last as long as the dog remains in the warning zone. If the dog moves away, the tone shuts off. If the dog continues toward the boundary, the initial low-level stimulus occurs.

#### **Troubleshooting Fence Free Use:**

We are committed to assisting you with the use of our products. If you have any questions or concerns, contact Woodstream Customer Care at 1-800-800-1819 ext 450 between 8 am – 7 pm EST.

#### **TROUBLESHOOTING**

- a. If it appears collar is not working, make sure the collar is fully charged (see "Turning the Collar On & Off") and test it with the test light. If this doesn't correct the problem, contact Woodstream Customer Care 1-800-800-1819 ext. 450 between 8 am – 7 pm EST.
- b. If the test light works but it appears to not be delivering a correction to your pet, check the fit of the collar and length of the probes (see "Fitting, Charging the Collar"). The probes need to be in contact with the pet's skin to deliver correction.
- c. If collar is correcting your dog at unexpected times, it may be caused by three things:

- (i) The signal width is not set correctly thus it is transmitting a signal in unexpected locations. Recheck Step 5 “Setting the Signal Field for Boundary Width.”
  - (ii) The flags have been placed too far into the signal field inducing correction earlier than expected. Recheck Step 6 “Placing the Flags.”
  - (iii) The collar is being stimulated by some outside factor thus you need to reset the ID code. Recheck Step 9 “Changing Preset ID Code.”
- d. The loop wire light is Off. See section entitled “Wall Unit Features – Indicator Lights.” It may be that one or both wires are not properly connected, a wire may be broken or nicked, the wall unit has lost its power source or the wall unit has failed (most commonly caused by lightning surges).
- e. My pet vocalizes or reacts in some other negative manner to stimulation. This is most commonly caused by stimulation that is set too high for the comfort level of this pet. The stimulation level needs to be reduced. See Step 7 “Changing the Receiver Collar Correction Level.” In addition to reducing the correction level you will need to restore the positive nature of the training by reducing the training for a couple of days and adding a lot of praise, play and treats when training resumes.

Congratulations on successfully completing the first phase. You’re now ready to begin training your dog to respond to the system. Please see the instructions in the Training Guide and Training DVD for complete details.

## **10. 5132 FENCE FREE DELUXE Doing the Best for your Best Friend**

In addition to securely containing your dog, the Havahart Fence Free Deluxe (#5132) comes with a hand held remote trainer that will help you train your dog to follow the essential obedience commands: Sit, Stay, Heel, Wait, Down, Come, among others. A well-trained, obedient dog is a pleasure for their owner and everyone who comes in contact with the dog. The Havahart Remote Trainer can be a useful aid in the training process, but you will be the key factor in its success. If you spend 5 minutes, 3 times a day training your dog for 4 to 6 weeks, you’ll be surprised at the positive results – and even amazed at how smart (and trainable) your dog is!

### **Background**

The 5132 Fence Free Deluxe comes with the hand held trainer and a charger for it. Use the charger only with the hand held unit. Charge the collar on the docking station. Before you begin to use the Remote Trainer with your dog, please review the following important information regarding the operation of the unit. Once you’re familiar with the different settings and signals, you’ll be ready to go!

### **Charging the Hand Held Remote**

**Charge the unit before use of the product.** To charge, plug AC adapter into standard household outlet and plug charging end into hand held remote. Initial charge will take up to 10 hours and all subsequent charges should take 2 or more hours to completely charge the battery.

### **Transmitter and Collar Testing**

After the transmitter and collar have been charged, use the heart-shaped test light supplied with your collar to easily test your collar to ensure that it is delivering

an electrical stimulus. On initial set-up and before each remote training session, place the holes in the heart firmly against the probes on the collar, making sure that the wires in the light are touching the probes. Press each of the three buttons, one after another, and observe that the light on the heart flashes after each button is pressed. This ensures that the collar and transmitter are fully functional.

## **11. USING HAND HELD REMOTE – 5132 ONLY**

The Hand Held Remote works by using an electronic stimulus to encourage your dog to follow your directions/commands. This is a proven technique used by essentially all training professionals. It is a safe and highly effective method to affect two kinds of behavior changes: eliminating negative behavior and creating desired positive behavior.

When you press the appropriate button, a stimulus is sent to the receiver collar. The stimulus is delivered via the collar receiver probes. As a safety feature, the unit automatically shuts off if a button is pressed for 10 seconds. If you wish to use tone to control behavior, simply press the Bad Tone button. Your dog will hear an audible tone instead of receiving stimulation and will begin to associate the tone to the misbehavior.

The Remote Trainer offers you two training modes– Stimulus with Tone or Tone only. There are 3 levels of stimulus with tone- 1 (low), 2 (medium) and 3 (high).

When training, always start at the lowest level and check your dog’s response to the stimulus. You should always use the lowest level necessary to get the desired response.

### **Training Tips:**

In your package you’ll find a series of Field Training Cards and Training DVD designed to allow you to focus on specific behaviors. If you spend 5-15 minutes, 3 times a day, 5 days a week, you’ll begin to notice rapid improvement in your dog’s behavior. Consistency is the key to success! Your training sessions should be enjoyable, filled with praise and end with a spirited play session.

**Eliminating Negative Behavior:** For all that we love about our dogs, they can at times also exhibit undesirable behaviors such as digging up that freshly planted flower bed, chewing your favorite shoes and barking at inappropriate times. To eliminate this behavior, you’ll need to watch your pet closely and every time they begin the negative activity administer a correction without any other commands or action on your part. Consistency is essential and very quickly your pet will relate the undesired action with the corrective stimulus and stop. If they do not stop increase the level of stimulus until you are certain they are aware of the stimulus.

**Creating Positive Behavior:** Dogs are very trainable and most are eager to please their owners. It’s up to you to make clear how you expect your dog to behave – with some training, your dog will quickly learn to follow your instructions.

According to certified dog trainers, the first step to a successful outcome is to teach your dog the desired behaviors (sit, stay, come, etc.) using a traditional 6-foot leash. Once your dog has learned the commands, you can use the collar to correct mistakes at the same time you correct with the leash. Once your dog is trained, the receiver collar ensures that obedience continues even when your dog is off the

leash, because it acts as an invisible leash that allows you to have control of your dog even at relatively great distances.

Please refer to the Fence Free Training Guide for specific training instructions and tips.

**Troubleshooting Fence Free Deluxe Use:**

Contact Woodstream Customer Care at 1-800-800-1819 ext 450 between 8 am – 7 pm EST to request assistance.

In addition to those problems discussed in the previous Troubleshooting section for the Fence Free product, you may encounter the following situations when using the Hand Held Trainer:

- a. If it appears the collar is not working, test it with the test light (see “Transmitter and Collar Testing”).
- b. If test light works but it appears to not be delivering a correction to your pet, check the fit of the collar and length of the probes (see “Fitting the Collar”). The probes need to be in contact with the pet’s skin to deliver correction.
- c. If test light does not work, recharge both the collar and transmitter batteries.
- d. If test light still does not work after recharging batteries, reset the address code (see “Changing Preset Address Code”) and repeat testing procedure.
- e. If collar is emitting a stimulus independent of the hand held transmitter, then it is being triggered by some other source. To eliminate this, reset the address code (see “Changing Preset Address Code”).

**Changing the Preset Identification Code:**

Your Fence Free Deluxe system has a preset identification code that allows the collar, wall unit and hand held transmitter to communicate. There are separate ID codes that allow communication between the collar and the wall unit and the collar and the hand held transmitter. **MOST USERS WILL NOT NEED TO CHANGE THIS IDENTIFICATION CODE.** There are however certain circumstances which might require resetting the codes. On the Fence Free Deluxe system these two codes are set independent of one another. If your fence system seems to be operating erratically, please reference Section 9 to change the ID code on the fence.

**To change the preset address code on the transmitter:**

- 1.) Turn the collar On and the transmitter Off.
- 2.) Press and hold the Bad Tone button on the transmitter with one hand, keeping it depressed throughout the whole process.
- 3.) Using your other hand, press the On/Off button. As soon as the LED on the transmitter comes on, release the On/Off button (keep pressing the Bad Tone button with the other hand) and observe the rapid flashing of the transmitter’s LED. It is sending a new code to the collar. Observe the LED on the collar. It will blink 4 times in rapid sequence indicating it is receiving a new code. You may now release the Bad Tone button.
- 4.) The code has been changed. The unit has now automatically selected a new random ID code from many separate discreet codes. The collar will revert to a single blink indicating battery mode.